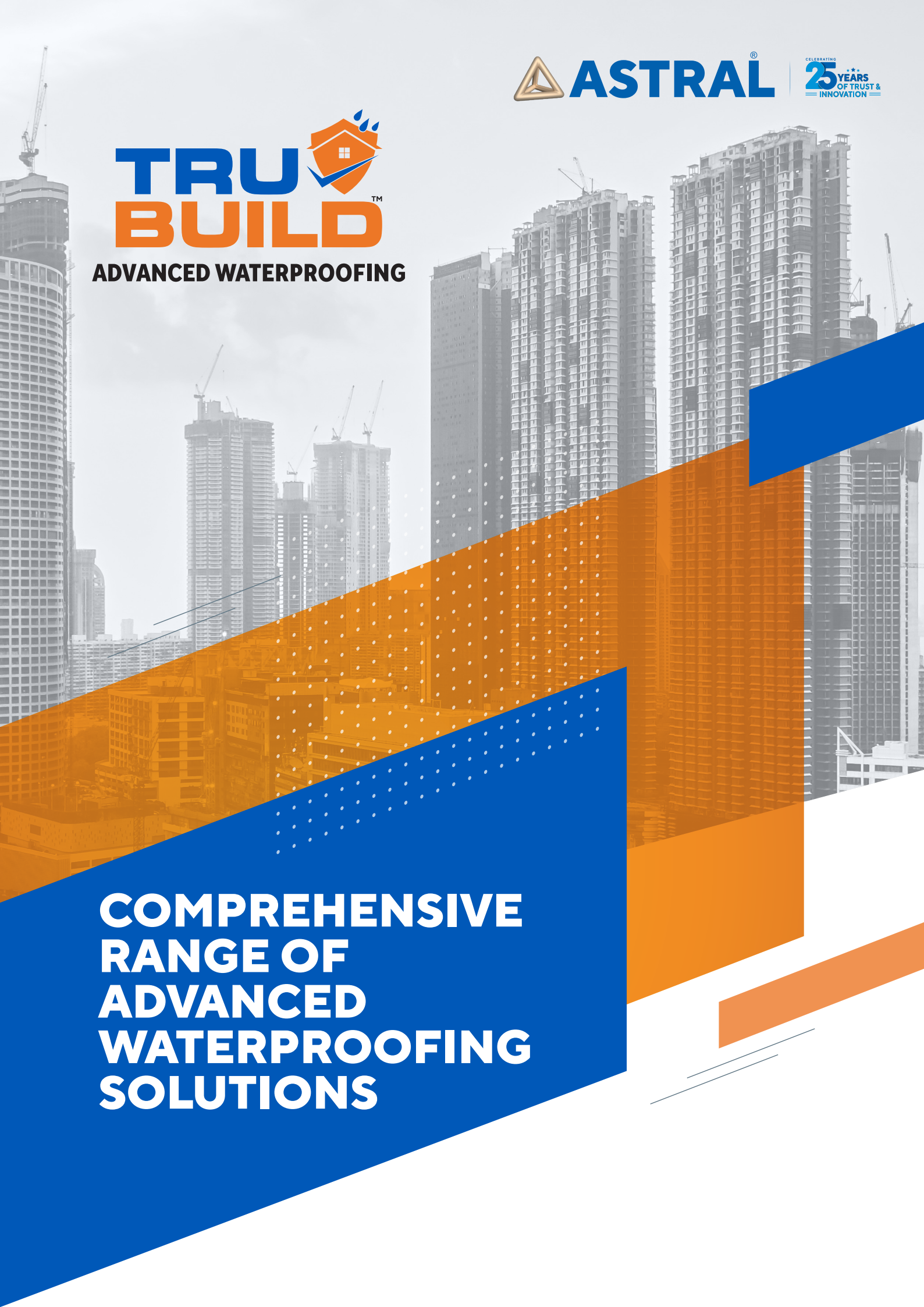
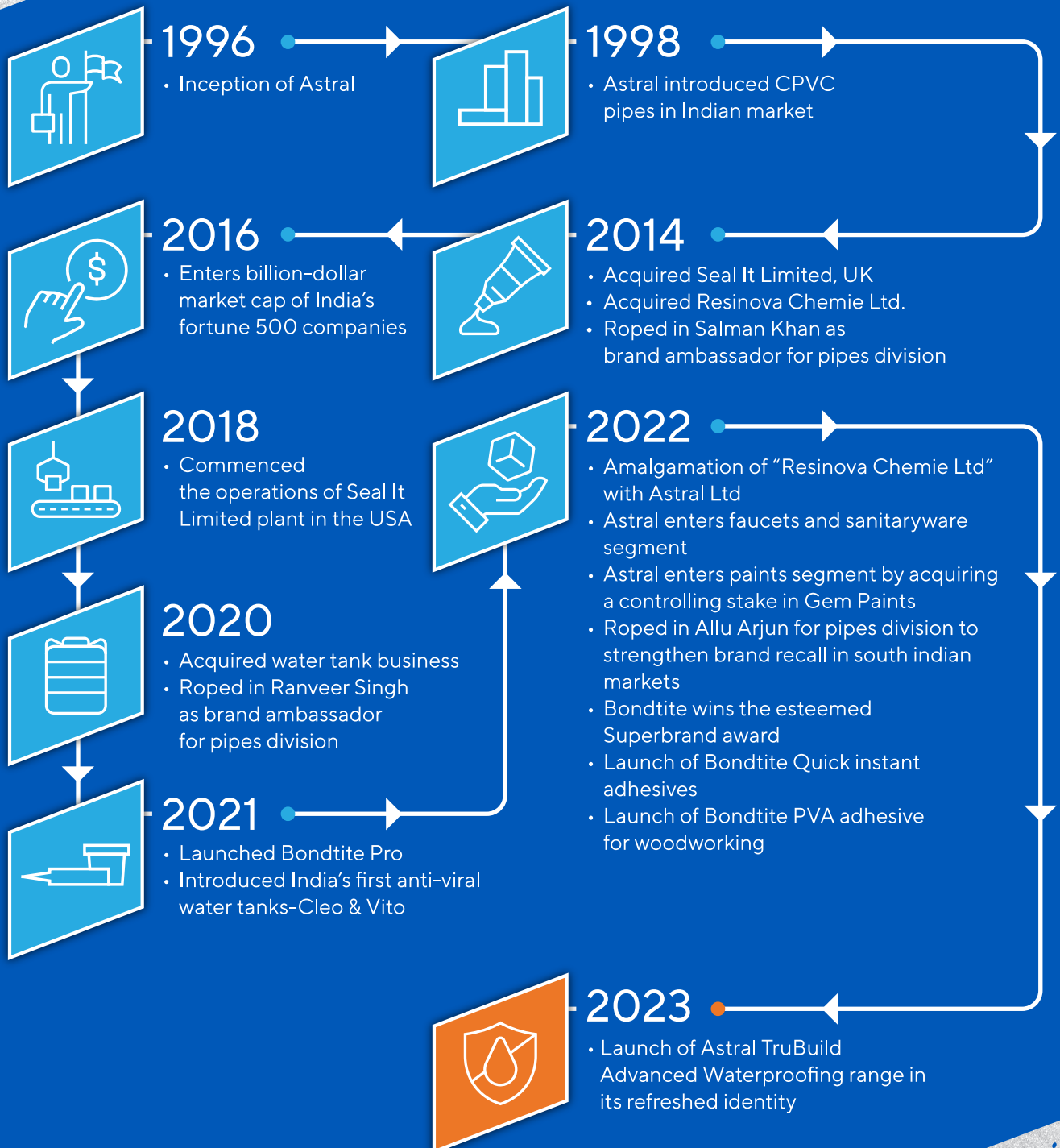


**TRU
BUILD**[™]**ADVANCED WATERPROOFING**

**COMPREHENSIVE
RANGE OF
ADVANCED
WATERPROOFING
SOLUTIONS**

THE 25 YEAR ASTRAL JOURNEY





Astral TruBuild: Elevating Excellence in Indian Construction Sector

Innovation drives Astral's journey in the Building Materials industry. A symbol of trust, we have contributed to the real estate sector in the past 25 years with our pioneering products and services.

TruBuild, an Astral legacy, specializes in the waterproofing, tiling, and grouting sectors

Water seepage harms the structure of any construction as it leads to mold formation and internal damage. As a result, increasing cost. Moreover, below-par tile solutions result in gaps, leakage, compromising appeal and hygiene. Our comprehensive product range can overcome both problems and ensure safety and aesthetics.

Astral TruBuild: Your Quality Symbol

From waterproofing to tiling, our products are truly built to perform. Our advanced waterproofing range ensures endurance and safeguards surfaces at every part of the construction, while our tile adhesives and grouting solutions offer firm bonds and beauty.

For structures that stand the test of time, choose Astral TruBuild.

Contents

Waterproofing

Trubuild CPS 111	08
Trubuild WPL 333	09
Trubuild WSL 334	10
Trubuild Buildcrete	11
Trubuild BWP 222	12
Trubuild APC 225	13
Trubuild Walltect Topcoat	14
Trubuild Walltect Basecoat	15
Trubuild WPC 666	16
Trubuild Rooftect Advanced	17
Trubuild Rooftect Pro	18
Trubuild Primesure Primer	19
Trubuild Primesure Premium	20
Trubuild Tru PU	21
Trubuild Tru PU Pura 1K	22
Trubuild Primesure EPMI	23
Trubuild Aqualock	24
Trubuild Aqualock Flexi	25
Trubuild Boretite	26

Protective Coatings

Trubuild WRP 777	28
Trubuild WTS 888	29

Crack filling

Trubuild CFP 425 Paste	31
Trubuild CFP 525 Powder	32

Repair & Rehabilitation

Trubuild WPL 333	34
Trubuild WSL 334	35
Trubuild BWP 222	36
Trubuild APC 225	37
Trubuild TCSR 555	38

Sealants

Resibond Weather 5010	40
Sealmaster Flexi	41

ASTRAL SOLUTION OFFERING

Stage	Product Name	Nature	Application
Water tank/ Swimming Pool	Trubuild Aqualock	Food grade CFTRI certified, two-component, acrylic modified, cementitious product	Coating on the concrete/ brick surface inside water tanks
	Trubuild CPS 111	Integral Waterproofing Compound	Additive in concrete/ plaster/ screed
	Trubuild TCSR 555	Food grade CFTRI certified, two component, solvent free, epoxy based product	Coating
	Trubuild Aqualock Flexi	Food grade CFTRI certified, premium, two component, acrylic-modified, cementitious product	Coating applied on concrete surface
	Trubuild WPL 333	Single component SBR based product	Used to make PMM
	Trubuild CFP 525	Crack Filling Powder	For filling non - structural cracks upto 3 mm
	Trubuild Boretite	One-pack, 4 component, epoxy based system	Core cut filling
	Trubuild Sealmaster Flexi	MS polymer-based, hybrid sealant	Crack filling on non-structural cracks
Bathroom/ Wet Areas	Trubuild CFP 425	Crack Filler Paste: read-to-use, acrylic based material	For filling non-structural cracks upto 5 mm
	Trubuild Aqualock	Food grade CFTRI certified, two component, acrylic modified, cementitious product	Sunken portion coating on mother slab
	Trubuild CPS 111	Integral Waterproofing Compound	Additive in concrete/ plaster/ screed
	Trubuild TCSR 555	Food grade CFTRI certified, two component, solvent free, epoxy based product	Core cut filling/ coating
	Trubuild Aqualock Flexi	Food grade CFTRI certified, premium, two component, acrylic modified, cementitious product	Sunken portion coating on mother slab
	Trubuild Buildcrete	Single component, acrylic polymer product	Coating on sunken area and PMM
	Trubuild Boretite	One pack, 4 component, epoxy-based system	Core cut filling
	Trubuild Sealmaster Flexi	MS polymer based, hybrid sealant	Crack filling on non-structural cracks
Roof Undercoats	Trubuild CFP 425	Crack Filling Paste	For filling non-structural cracks upto 5 mm
	Trubuild Tru PU	Pitch modified polyurethane	Coating applied on mother slab
	Trubuild Aqualock	Food grade CFTRI certified, two component, acrylic modified, cementitious product	Coating applied on mother slab
	Trubuild WPL 333	Single component, SBR based product	Coating applied on mother slab
	Trubuild WSL 334	SBR based product, high solid content	Coating applied on mother slab
	Trubuild APC 225	Single component, acrylic cement modifier	Coating applied on mother slab
	Trubuild BWP 222	Single component, acrylic cement modifier	Coating applied on mother slab
	Trubuild CPS 111	Integral Waterproofing Compound	Screed/BBC/plastering

Stage	Product Name	Nature	Application
Roof Undercoats	Trubuild TCSR 555	Food grade CFTRI certified, two component, solvent free, epoxy based product	Core cut filling/coating
	Trubuild Aqualock Flexi	Food grade CFTRI certified, premium, two component, acrylic modified, cementitious product	Protection coating on mother slab
	Trubuild CFP 525	Crack Filling Powder	For filling non-structural cracks upto 3 mm
	Trubuild Tru PU Pura 1K	Single component, pure PU based product	Coating on mother slab
	Trubuild Primesure EPMI	2 component, epoxy based primer	Primer for PU, polyurea and PU-hybrid
	Trubuild Sealmaster Flexi	MS polymer based hybrid sealant	Crack filling on non-structural cracks
Roof Topcoat	Trubuild Rooftect Advanced	PU-acrylate based product	Heat insulating and waterproofing topcoat
	Trubuild Rooftect Pro	Acrylic based product	Heat insulating and waterproofing topcoat
	Trubuild Primesure Premium	Water based, acrylic primer	Primer for china mosaic surface
Exterior wall	Trubuild CFP 425	Crack Filler Paste	For filling non-structural cracks upto 5 mm
	Trubuild WPC 666	Acrylic based coating	Waterproofing and decorative exterior coat
	Trubuild Primesure Primer	Acrylic based primer	Primer
	Trubuild Walltect Basecoat	Acrylic based coating	Basecoat for exterior wall waterproofing
	Trubuild Walltect Topcoat	Acrylic based coating	Waterproofing and decorative exterior coat
	Trubuild Sealmaster Flexi	MS polymer based, hybrid sealant	Crack filling of non-structural cracks
Multipurpose Clear Coating	Trubuild WRP 777	Silane based	Clear coat
	Trubuild WTS 888	Water thinnable acrylic	Clear coat
Internal Walls	Trubuild Sealmaster Flexi	MS polymer based, hybrid sealant	Crack filling of non-structural cracks
	Trubuild Aqualock	2 component, acrylic modified, cementitious product	Dampness protection for internal walls
	Trubuild Aqualock Flexi	2 component, acrylic modified, cementitious product	Dampness protection + efflorescence resistance



WATERPROOFING

TRUBUILD CPS 111

Integral Waterproofing Compound

TRUBUILD CPS 111 is silicate based integral water proofing compound which is specially designed to reduce porosity in cement concrete, mortar & plaster. It helps in reducing permeability of concrete and make it more cohesive.

Meets the requirement of IS 2645-2003

FEATURES

1. Reduces porosity in concrete & plaster
2. Improves workability
3. Delays rust formation in steel
4. Reduces rebound loss in plaster
5. Aids in making concrete cohesive
6. Reduce shrinkage cracks in plaster
7. Aids in better finish of concrete

APPLICATION AREAS

It can be used as additive for concrete and sand-mortar which is used for basement, beams, columns, roof slabs, screed, plaster, water retaining structures, BBC, etc.

HOW TO USE

Charge cement & aggregates to concrete mixer as per the mix design, mix in dry state for 1-2 minutes. Start addition of 75-80% mixing water & mix for 2-3 minutes. Trubuild CPS 111 is added as per the recommended dosage into the remaining mixing / gauging water, then add to concrete mixer & mix for another 2 minutes. Maintain water cement ratio as low as possible.

RECOMMENDED DOSAGE

200 ml per 50 kg bag of cement.

TECHNICAL INFORMATION

PROPERTIES	RESULTS
Physical State	Low Viscous Liquid
Appearance	Transparent
pH	9-13
Specific gravity	1.03-1.05 gm/cc

SHELF LIFE

Best before 24 months from date of manufacturing if stored properly in undamaged, unopened, original sealed packaging.

PACKAGING

200 ml | 500 ml | 1 L | 5 L | 10 L | 20 L | 50 L | 200 L



TRUBUILD WPL 333

Waterproofing SBR Latex

TRUBUILD WPL 333 is a ready to use styrene butadiene latex (SBR) for cement, concrete & mortar for waterproofing application. It is also can be used for repairing of old construction like floor, beams ,slabs etc. and water proofing of toilets, kitchen, roof, bathroom and roof, etc.

FEATURES

1. Easily applied by brush
2. Good waterproof coatings
3. Excellent cement modifier
4. Bond strongly to concrete, plaster, masonry
5. Improved flexural strength

APPLICATION AREAS

1. Waterproofing of roof, bathroom, kitchen, etc
2. As repair mortar – Polymer Modified Mortar for repairing of beams, column, etc
3. Bonding agent – for bonding new to old concrete/plaster substrate

HOW TO USE

Waterproof coating – After proper surface preparation, maintain the surface in SSD condition. For water proof coating make a slurry of 1:1.5 ratio (by volume) of Trubuild WPL 333 and cement. Apply 1st coat on surface and allow it to dry. After 4-6 hrs of first coat, apply second coat and then again allow it to dry for 5 -6 hrs. After proper curing for 7-10 days, cover coated membrane with protective screed.

MIXING RATIO

- Bond Coat: Trubuild WPL 333 + Cement = 1:1 (By volume)
- Waterproofing Coating: Trubuild WPL 333 + Cement in the proportion 1:1.5 (By volume, for waterproofing)
- Repair Mortar: Trubuild WPL 333 + Cement + Sand + Water = 7.5kg: 50kg: 150kg: 10L (For repair).



TECHNICAL INFORMATION

PROPERTIES	RESULTS
Physical State	Low Viscous Liquid
Appearance	Milky White
pH	7 - 9
Total Solid Content	38±1%
WFT*	Min. 500μ / 2 coats
DFT*	Min. 360μ / 2 coats

*Note: Depends upon the porosity of the substrate.

THEORETICAL COVERAGE

20-22 sq ft /kg / 2 coats for waterproofing coating

SHELF LIFE

Best before 24 months from date of manufacturing if stored properly in undamaged, unopened, original sealed packaging.

PACKAGING

200 gm | 500 gm | 1 kg | 10 kg | 20 kg | 50 kg

TRUBUILD WSL 334

Waterproofing Super SBR Latex

TRUBUILD WSL 334 is single component, ready to use styrene butadiene latex (SBR) with high performance characteristics. It can be used for repairing of old construction like floor, beams slabs etc. and for water proofing of toilets, kitchen, roof, bathroom and roof, etc.

FEATURES

1. Economical waterproofing
2. Can be used as bonding agent to increase adhesion of new to old concrete/plaster surface
3. Easily applied by brush
4. Improves flexural strength

APPLICATION AREAS

1. Waterproofing of roof, bathroom, kitchen, etc
2. As repair mortar – Polymer Modified Mortar for repairing of beams, columns, etc
3. Bonding agent – For bonding new to old concrete/plaster substrate

HOW TO USE

Waterproof coating – After proper surface preparation, maintain the surface in SSD condition. For water proof coating make a slurry of 1:4:7 ratio (by volume) of Trubuild WPL 334 ,water and Cement. Apply 1st coat on surface and allow it to dry. After 4-6 hrs of first coat, apply second coat and then again allow it to dry for 5-6 hrs. After proper curing for 7-10 days, cover coating with protective screed.

MIXING RATIO

- Bondcoat : Trubuild WSL 334 + Water + Cement = 1:4:7 (By volume)
- Waterproofing Coating: Trubuild WSL 334 + Water + Cement = 1:4:7 (Waterproofing slurry) (By volume)
- Repair Mortar: Trubuild WSL 334 + Water + Cement + Sand = 5L: 15L: 50kg: 150kg



TECHNICAL INFORMATION

PROPERTIES	RESULTS
Physical State	Low Viscous Liquid
Appearance	Milky White
pH	7-9
Total Solid Content	43±1%

THEORETICAL COVERAGE

80-90 sq ft /kg / 2 coats for waterproofing coating

SHELF LIFE

Best before 24 months from date of manufacturing if stored properly in undamaged, unopened, original sealed packaging.

PACKAGING

200 gm | 500 gm | 1 Kg | 5 Kg | 10 Kg | 20 Kg

TRUBUILD BUILDCRETE

Acrylic Polymer for Waterproofing And Repair

Trubuild Buildcrete is an acrylic polymer-based compound that forms a matrix when mixed with cement with excellent waterproofing properties. Trubuild Buildcrete enhances the properties of cement slurry/ mortar, making it an excellent choice to use it in new as well as renovation work

FEATURES

1. Excellent bonding
2. Good in waterproofing and repair
3. UV stable

APPLICATION AREAS

1. Toilet, kitchen and bathroom sunken areas
2. Roof, balconies etc on the concrete slab
3. Swimming pools and basements

HOW TO USE

1. After proper surface preparation the surface should be brought to SSD condition before the application of waterproof coating. Use 10-15% Trubuild Buildcrete by weight of cement, in a 1:3 cement and sand mortar for repairing of cracks as per the suitability.
2. **For waterproof coating** make slurry of Trubuild Buildcrete and cement in 1:2 ratio, by weight. Charge cement into the Trubuild Buildcrete and mix it slowly to get homogenous mixture.
For bond coat, mix Trubuild Buildcrete and cement in 1:1.5, ratio, by weight & ensure to overlay the repair mortar when the bond coat is still tacky.
3. **Application** - Two or more coats are recommended. First coat should be allowed to air dry for 5-6 hours prior to application of subsequent coat.
4. After moist curing for 24 hrs, and air curing for 3 to 5 days cover coating with a protective screed.

MIXING RATIO

- **Bond Coat** - Mix Trubuild Buildcrete and cement in 1:1.5, ratio, by weight
- **Waterproofing Coat**- Slurry of Trubuild Buildcrete and cement in 1:2 ratio, by weight.
- **Repair Mortar** - 10-15% Trubuild Buildcrete by weight of cement, in a 1:3 cement and sand mortar.

For more technical details please refer latest TDS.



TECHNICAL INFORMATION

PROPERTIES	STANDARD	RESULTS
Physical State		Viscous Liquid
Appearance	-	Opaque
Colour	-	Milky White
Density(gm/cc)	ASTM D 1475-2013	1.02 ± 0.02
% Solid	ASTM D 1644-2001	30 ± 3
pH	IS 9103-1999	>7
Pull of Strength (Mpa)	ASTM D7234-2022	>1
Bond Strength (Mpa)	ASTM C 109-2021	Approx. 4

THEORETICAL COVERAGE

25-30 sqft /kg/2 coat

NOTE- Coverage may vary due to undulation and porosity of the substrate

SHELF LIFE

Best before 24 months from the date of manufacturing

PACKAGING

50 Kg | 20 Kg | 5 Kg | 1 Kg

TRUBUILD BWP 222

Binder & Waterproofer

TRUBUILD BWP-222 is an acrylic co-polymer emulsion which can be used as waterproofing coating, as bonding agent for new substrate to old substrates and as cement mortar modifier.

FEATURES

1. Tough and abrasion resistant coating
2. Good cement modifier
3. Bond strongly to concrete, plaster, masonry

APPLICATION AREAS

1. Waterproofing of roof, bathroom, kitchen, etc
2. As repair mortar – Polymer Modified Mortar for repairing of beams, columns, etc
3. Bonding agent – For bonding new to old concrete substrate
4. Protection of concrete against corrosion

HOW TO USE

Waterproof coating – After proper surface preparation, maintain the surface in SSD condition. For water proof coating make a slurry of 1:2 ratio (by weight) of Trubuild BWP 222 and Cement. Apply 1st coat on surface and allow it to dry. After 4-6 hrs of first coat, apply second coat and then again allow it to dry for 5 -6 hrs. After proper curing for 7-10 days, cover coating with protective screed.

MIXING RATIO

- Bondcoat : Trubuild BWP 222 + Cement = 1 : 1.5 (By weight)
- Waterproofing coating : Trubuild BWP 222+ Cement = 1:2 (By weight)



TECHNICAL INFORMATION

PROPERTIES	RESULTS
Physical State	Low Viscous Liquid
pH	7 - 8
Total Solid Content	38±1%
WFT*	Min. 500µ / 2 coats
DFT*	Min. 360µ / 2 coats

*Note: Depends upon the porosity of the substrate.

THEORETICAL COVERAGE

20-22 sq ft /kg / 2 coats for waterproofing coating

SHELF LIFE

Best before 24 months from date of manufacturing if stored properly in undamaged, unopened, original sealed packaging.

PACKAGING

200 gm | 500 gm | 1 kg | 5 kg | 20 kg

TRUBUILD APC 225

Acrylic Polymer Coating

TRUBUILD APC-225 is an acrylic polymer-based coating which is used in conjunction with cement as a coating for waterproofing and for bonding application.

FEATURES

1. Economical
2. Excellent adhesion
3. Can be used for horizontal and vertical applications
4. Can be used as bonding agent to increase adhesion of new to old concrete/plaster surface
5. Bond strongly to concrete, plaster, masonry

APPLICATION AREAS

1. Waterproofing of roof, bathroom, kitchen, etc
2. As repair mortar – Polymer Modified Mortar for repairing of beams, columns, etc
3. Bonding agent – For bonding new to old concrete/plaster substrate

HOW TO USE

Waterproof coating – After proper surface preparation, maintain the surface in SSD condition. For water proof coating make a slurry of 1:2 ratio (by weight) of Trubuild APC 225 and Cement. Apply 1st coat on surface and allow it to dry. After 4-6 hrs of first coat, apply second coat and then again allow it to dry for 5-6 hrs. After proper curing for 7-10 days, cover coating with protective screed.

MIXING RATIO

Waterproofing coating: Trubuild APC 225 +
Cement = 1 : 2 (By weight)



TECHNICAL INFORMATION

PROPERTIES	RESULTS
Physical State	Low Viscous Liquid
Appearance	Opaque
Color	White
pH	7-8
Specific Gravity	1.01-1.03
Compressive Strength	30-40 N/mm ²
*WFT (2 Coats)	Min.300 microns /2 coats
*DFT (2 Coats)	Min.200 microns /2 coats
*Note – It depends upon the porosity of the substrate.	

THEORETICAL COVERAGE

25-30 sq ft /kg / 2 coats for waterproofing coating

SHELF LIFE

Best before 24 months from date of manufacturing if stored properly in undamaged, unopened, original sealed packaging.

PACKAGING

10 kg | 20 kg | 50 kg

TRUBUILD WALLTECT TOPCOAT

Elastomeric and Decorative Acrylic
Waterproof coating for Exterior walls



*T&C apply.

TRUBUILD WALLTECT TOP COAT is single component, ready to use acrylic based elastomeric coating with inherent crack bridging ability for exterior walls. It provides a high quality waterproofing cum decorative coating for exterior walls. Suitable for all types of external masonry surfaces like concrete, cement and plaster.

FEATURES

1. Excellent bonding with substrate
2. Excellent elongation
3. Crack bridging ability up to 1 mm
4. UV resistance
5. Fungi and Algae resistance
6. Best-in-class breathable coating
7. High SRI value

APPLICATION AREAS

1. Facades
2. External walls
3. Exterior RCC

HOW TO APPLY

- a) Surface preparation and filling of cracks with CFP 425 or WPL333/BWP222 as per cracks size.
- b) Use Trubuild Primesure Primer at 50% water dilution on SSD surface as a primer.
- c) After 4-6 hours drying, apply undiluted 1st coat.
- d) After 4-6 hours drying, apply undiluted 2nd coat in 90 degree of first coat.
- e) Allow the system to fully cure for 7 - 10 days.

** 8 years waterproofing warranty – Trubuild Primesure Primer + 2 Coats of Trubuild Walltect Topcoat

10 years waterproofing warranty – Trubuild Primesure Primer + 1 Coat of Trubuild Walltect Basecoat + 2 Coats of Trubuild Walltect Topcoat

THEORETICAL COVERAGE

35- 40 sq.ft./L/2 coats

SHELF LIFE

Best before 36 months from date of manufacturing if stored properly in undamaged, unopened, original sealed packaging.

PACKAGING

1 L | 4 L | 20 L



Excellent Weather Resistance



≥ 160% Elongation



1 mm Crack Bridging



Approx. 60 – 70 micron thick coating (single Coat)

TRUBUILD WALLTECT BASECOAT

Premium Grade high performance acrylic emulsion based waterproof coating



TRUBUILD WALLTECT BASECOAT is single component high performance acrylic based waterproof coating system which is UV stable and comes with biocide additives. It is used as a waterproofing and basecoat for exterior walls of the buildings.

FEATURES

1. Excellent adhesion to the cementitious substrate
2. Excellent elongation
3. High film buildup in single coat
4. Best-in-class breathable coating

APPLICATION AREAS

External walls, masonry walls, exterior RCC, cement rendering

HOW TO USE

- a) Surface preparation and filling of cracks with CFP 425 or WPL333/BWP222 as per cracks size.
- b) At fresh site, use Primesure primer@2:1 dilution onto the SSD surface. In repainting site, based on the soundness of surface, primer may not be needed.
- c) After 4-6 hours of drying, apply undiluted 1 coat of Walltect basecoat and allow it to dry for 4 – 6 hours.
- d) Apply any acrylic/semi-acrylic water based top coat or Walltect Top coat for finishing and allow the system for curing for 2-3 days.

THEORETICAL COVERAGE

45- 50 sq ft/L/coat

SHELF LIFE

Best before 36 months from date of production if stored properly in undamaged, unopened, original sealed packaging.

PACKAGING

1 L | 4 L | 20 L



Compatible with any Acrylic water based Paint/Coating



≥150% Elongation



Bond Strength ≥ 2MPa



Approx. 120 – 130 micron (single Coat)

TRUBUILD WPC 666

Waterproofing Compound



*T&C apply.



TRUBUILD WPC 666 is a single component elastomeric acrylic based exterior protective coating to be applied over exterior surface of walls, to prevent entry of water and moisture.

FEATURES

- Good elongation
- Elastomeric membrane
- Good adhesion to cementitious substrate
- Can be tinted as per desired color
- UV resistant

APPLICATION AREAS

As coating on External facades or Masonry wall

HOW TO APPLY

Remove the loose materials, oil, dirt, debris from the substrate. Fill all the existing cracks up to 5 mm by making "v" groove and then filling it with crack filler paste (CFP 425). For cracks larger than 5mm use polymer modified mortar making with WPL 333. Before application of WPC 666 on the substrate, it is to be ensured that the surface should be in a saturated dry condition. For filling the pores on the surface mix the WPC 666 with water as specified, then apply it as a primer coat. The coverage of primer coat will be approx. 80-90 sq.ft per kg depending upon the substrate condition. After drying of primer coat apply 1st coat of WPC 666 horizontally without any dilution. Allow the first coat to dry for min. 5-6 hours then apply 2nd coat vertically without dilution.

TECHNICAL INFORMATION

PROPERTIES	RESULTS
Physical State	Low Viscous liquid
Appearance	Opaque
Curing time	7-10 days
Coverage	7-8 sq.mtr/kg (Brush application, Single coat)
SRI Value	97

THEORETICAL COVERAGE

3.5 – 4 sq m/ kg/ 2 coats

SHELF LIFE

Best before 18 months from date of manufacturing if stored properly in undamaged, unopened, original sealed packaging.

PACKAGING

250 gm | 500 gm | 1 kg | 5 kg | 20 kg

TRUBUILD ROOFTECT ADVANCED

PU – Acrylate based
Waterproof Coating



TRUBUILD ROOFTECT ADVANCED is a single component PU Acrylate based elastomeric waterproof membrane, which provides excellent barrier against water and heat. It forms a seamless membrane which has excellent elongation along with good crack bridging ability and excellent reflectance properties.

FEATURES

1. Excellent adhesion to substrate
2. Excellent elongation
3. Crack bridging ability up to 2 mm
4. UV resistant
5. Good breathability
6. High SRI value

APPLICATION AREAS

Over existing building Flat/ Slope roof surface like;

1. Brick-Bat Coba finish surface
2. Cement mortar screed
3. China mosaic tile roofs
(*refer TDS/Astral representative)

HOW TO USE

- a) Surface preparation and filling of cracks with CFP 425 or WPL333/BWP222 as per cracks size.
- b) Self-priming coat with Trubuild Advanced at 50% dilution on SSD surface.
- c) After 4-6 hours of drying, apply undiluted 1st coat.
- d) After 4-6 hours of drying, apply undiluted 2nd coat in 90 degree of first coat.
- e) Allow the system to fully cure for 7 – 10 days.

THEORETICAL COVERAGE

Self-priming coat – 85-105 sq.ft. / L / coat

Undiluted coat - 21-24 sq.ft. / L / coat

SHELF LIFE

Best before 24 months from date of manufacturing if stored properly in undamaged, unopened, original sealed packaging.

PACKAGING

1 L | 4 L | 20 L



Temperature
Reduction Up to 10°C



≥220% Elongation



Up to 2 mm
Crack Bridging



Approx. 500
micron

TRUBUILD ROOFTECT PRO

Heavy Duty Fibre Reinforced Acrylic Waterproof Coating



TRUBUILD ROOFTECT PRO is single component fibre reinforced acrylic base liquid applied, elastomeric waterproofing membrane for roof/terrace application. It forms seamless membrane having high strength, flexibility, durability, weather resistance & excellent waterproofing properties

FEATURES

1. Excellent adhesion to substrate
2. Excellent elongation
3. Crack bridging ability up to 2 mm
4. UV resistant
5. Good breathability
6. High SRI value

APPLICATION AREAS

Over existing building Flat/ Slope roof surface like;

1. Brick-Bat Coba finish surface.
2. Cement mortar screed
3. China mosaic tile roofs
(*refer TDS/Astral representative)

HOW TO USE

- a) Surface preparation and filling of cracks with CFP 425 or WPL333/BWP222 as per cracks size.
- b) Apply Self Priming Coat with Trubuild Rooftect PRO at 33% water dilution on SSD surface.
- c) After 4-6 hours of drying, apply undiluted 1st coat.
- d) After 4-6 hours of drying, apply undiluted 2nd coat in 90 degree of first coat.
- e) Allow the system to fully cure for 7 - 10 days.

THEORETICAL COVERAGE

Self - priming coat - 85 - 105 sq.ft. / L / coat
Forced system coverage of 10 sq.ft. / L

SHELF LIFE

Best before 36 months from date of manufacturing if stored properly in undamaged, unopened, original sealed packaging.

PACKAGING

1 L | 4 L | 20 L



Up to 10° C
Temperature Reduction



>350% Elongation



Up to 2 mm
Crack Bridging



Approx. 600 - 650
micron thick coating

TRUBUILD PRIMESURE PRIMER

High Quality Water Based
Acrylic Primer

TRUBUILD PRIMESURE PRIMER is single component ready to use water-based primer composed of acrylic emulsion polymer with properly selected fine fillers & additives which gives excellent priming and pores sealing properties.

FEATURES

1. Excellent bonding
2. Excellent penetration
3. Efflorescence resistance
4. Weather resistance

APPLICATION AREAS

Priming of plastered walls, concrete surface, BBC, etc

HOW TO USE

Ensure that proper surface preparation is done. Saturate the surface with water. Apply Trubuild Primesure Primer after diluting it with water in 2:1 (50% dilution).

MIXING RATIO

Primesure Primer : Water – 2 : 1

THEORETICAL COVERAGE

8 – 10 m² / L / coat

SHELF LIFE

Best before 36 months from date of manufacturing if stored properly in undamaged, unopened, original sealed packaging.

PACKAGING

1 L | 4 L | 20 L



TRUBUILD PRIMESURE PREMIUM

High Quality Water Based
Acrylic Primer

TRUBUILD PRIMESURE PREMIUM is an excellent water-based primer with good penetration and outstanding bond strength, which can be used on multiple surfaces like concrete, screed, cement sheet, glossed surface like china mosaic, Tiles, etc before application of protective water based top coats.

FEATURES

1. Water based
2. Excellent bonding to glossed surface like China mosaic

APPLICATION AREAS

Priming of multiple surfaces like concrete, screed, cement sheet, glossed surface like china mosaic, Tiles, etc before application of protective water based top coats

HOW TO USE

- a) **Surface Preparation:** The surface should be clean and dried before application of Trubuild Primesure Premium. It should be free from dust, unsound material, loose plaster, oil, paint, grease, algae and corrosion deposits. Fill all the cracks up to 5mm by Trubuild CFP 425 and for more than 5mm and above, by making PMM using Trubuild WPL 333/ Trubuild BWP 222.
- b) **Application Methodology:** Mix well after opening the container of Trubuild Primesure Premium before application. Then apply the Trubuild Primesure Premium by brush ensuring covering of all the waterproofing area where subsequent water based top coats will come further. Leave it for 3-5 hours for air curing, then apply water based Top coat.

THEORETICAL COVERAGE

120- 150 sq.ft. / L / coat

SHELF LIFE

Best before 12 months from date of manufacturing if stored properly in undamaged, unopened, original sealed packaging.

PACKAGING

1 L



TRUBUILD TRU-PU

PU Liquid Waterproofing Membrane

TRUBUILD TRU PU is a single component, water based, bitumen modified elastomeric PU waterproofing membrane. It provides excellent barrier to protect structural members from vapour, salts and water.

FEATURES

1. Single component – Easy to apply
2. Water based
3. High elasticity ensures a permanent flexible barrier
4. Crack bridging ability up to 2 mm

APPLICATION AREAS

1. Waterproofing of roof, retaining wall, basement, podium etc
2. As an undercoat in Remedial waterproofing

HOW TO USE

Ensure that proper surface preparation is done. Apply primer coat by mixing Tru Pu with 20% water. After 4-6 hours of primer coat, apply 2 neat coats of Tru Pu with time interval of 4-6 hours. After proper curing for 7-10 days, protect coating with screed.

MIXING RATIO

For primer coat- dilute Tru Pu with 20% water. For waterproof 2 coats- no dilution.



TECHNICAL INFORMATION

PROPERTIES	RESULTS
Physical State	Viscous Liquid
Appearance	Bluish Black
Density	1.1 gm/cc
Total Solid Content (%)	42±1
Curing Time	7 days
Elongation (%)	600%
WFT*	Min. 1000µ / 2 coats
DFT*	Min. 500µ / 2 coats

*Note: Depends upon the porosity of the substrate.

THEORETICAL COVERAGE

1.1 Kg / m² at 1 mm WFT

SHELF LIFE

Best before 12 months from date of manufacturing if stored properly in undamaged, unopened, original sealed packaging.

PACKAGING

1 kg | 20 kg

TRUBUILD TRU PU PURA 1K

Polyurethane Based Liquid Applied Waterproofing Compound

Tru PU Pura 1K is a single-component, ready-to-use, pure, polyurethane-based, liquid applied waterproofing membrane. It has excellent waterproofing properties and can be applied by brush & roller.

FEATURES

1. Single component, hence ready to apply
2. Good crack bridging ability
3. Excellent adhesion to metal & concrete.
4. Seamless coating, hence no joint
5. Root resistant
6. Liquid applied membrane, hence easy to use
7. Excellent waterproofing properties
8. Excellent bond strength, hence good durability

APPLICATION AREAS

1. Waterproofing of balconies, terraces, sloppy roofs, bridges etc
2. Waterproofing of Podiums, Tunnels, deck area & canals etc.

HOW TO USE

1. After proper surface preparation the concrete/metal surface, make sure the surface moisture is not more than 5%. Repair cracks with PMM using WPL333/APC225 etc.
2. The surface should be primed with Primesure EPMI at a coverage of 80-100 sqft/L and allow to reach touch dry condition.
3. Mix TRU PU PURA 1K with slow speed stirrer, and pour onto the surface and apply with brush/roller to restrict WFT to 0.5 – 0.6 mm thickness for each layer.
4. Allow the coating to cure for 24 hrs before applying the consecutive layer (Not more than 48 Hrs), at same thickness and consumption.
5. Recommended curing for 7 days post final coat for best results.



TECHNICAL INFORMATION

PROPERTIES	STANDARD	RESULTS
Appearance	-	Opaque
Colour	-	Red, Grey, White (Subject to availability)
% Solid	ASTM D 1644-2001	>85
Tensile Strength (N/mm ²)	ASTM D 412:2016	>2
Elongation	ASTM D 412:2016	>500%
Density at 25°C	g/cc	1.45
Root Penetration	CEN/TS 14416:2014	No root penetration
Shore A		60

THEORETICAL COVERAGE

Approx 0.14 - 0.15 KG to achieve 1 mm DFT per sq.ft

NOTE- Coverage may vary due to undulation and porosity of the substrate

SHELF LIFE

Best before 12 months from date of manufacturing if stored properly in undamaged, unopened, original sealed packaging.

PACKAGING

25 kg

TRUBUILD PRIMESURE EPMI

Epoxy Based Primer

Trubuild Primesure EPMI is a two-component, epoxy-based, solvent-free, moisture insensitive primer. This can be used as primer for PU, polyurea and PU Hybrid water proofing coating.

FEATURES

1. Low viscous, hence good penetration
2. Good brush ability, hence ease of application
3. Excellent bonding with substrate
4. Moisture resistant upto 5%

APPLICATION AREAS

Primer for concrete surfaces especially for products like PU, PolyUrea, & PU Hybrids.

HOW TO USE

1. Clean surface thoroughly and achieve dry condition surface. Concrete should be 20 MPS at 28 days
2. Mix base & hardener components separately, then entire content of the Part-B (hardener) should be poured into the Part-A (base) & thoroughly mixed for 2-3 minutes
3. Apply this mix with a brush or roller to the prepared surface and allow to cure.

PRECAUTIONS & LIMITATIONS:

- Do not dilute
- Not recommended for under water repairs
- Multiple coats to build thickness are not recommended

THEORETICAL COVERAGE

Approx. 80-100 sqft/L.

NOTE- Coverage may vary due to porosity and undulation of the substrate.



TECHNICAL INFORMATION

PROPERTIES	RESULTS
Physical State	Translucent Liquid
Density at 25°C	0.95 ± 0.02
Pot Life at 30°C	60 min
Tack Free Time at 30°C	180 min

SHELF LIFE

Best before 12 months from the date of manufacturing

PACKAGING

8 L Pack (Part A 5 L & Part B 3 L)

TRUBUILD AQUALOCK

Two Part Acrylic Cementitious Waterproof Coating

TRUBUILD AQUALOCK is two component acrylic-modified elastomeric cementitious waterproof coating for concrete and masonry surface. It is supplied in two part ready to mix kit in which both parts to be mixed in predefined ratio to form flexible and seamless waterproof membrane that acts as an excellent water barrier.

Meets requirements of USFDA 175:300

FEATURES

1. CFTRI approved
2. Withstand up to 5 bar positive and up to 3 bar negative water pressure
3. Flexible coating
4. Crack bridging ability up to 1 mm
5. Easy to apply

APPLICATION AREAS

Waterproofing of water tank, roof, retaining wall, basement, lift pits, etc

HOW TO USE

Ensure that proper surface preparation is done and surface is free from cracks, dust, grease, oil, debris etc and saturate the surface with water. Using mechanical mixer, slowly add powder part to liquid part in a clean container until a smooth and homogenous slurry mixture is achieved. Apply 2 neat coats in opposite direction of Trubuild Aqualock with time interval of 4-6 hours. After proper curing for 7-10 days, cover coating with protective screed.

MIXING RATIO

Powder : Liquid – 2 : 1 (by weight)



TECHNICAL INFORMATION

PROPERTIES	RESULTS
Appearance	Opaque
Tensile strength	0.4 MPa
Surface adhesion	Min. 1MPa
Elongation	≥60%
WFT*	Min. 1000μ / 2 coats
DFT*	Min. 800μ / 2 coats

*Note: Depends upon the porosity of the substrate.

THEORETICAL COVERAGE

1.65 – 1.75 kg / m² / 2 coats

SHELF LIFE

Best before 12 months from date of manufacturing if stored in undamaged, unopened, original sealed packaging.

PACKAGING

3 kg | 15 kg | 90 kg

TRUBUILD AQUALOCK FLEXI

Two Part Acrylic Modified High Performance Waterproof Coating

TRUBUILD AQUALOCK FLEXI is two component acrylic-modified high performance elastomeric cementitious waterproofing membrane coating particularly designed for Concrete and Masonry surface. This can be used for both positive and negative side waterproofing due to its high resistance to hydrostatic pressure.

Meets the requirement of USFDA: 175:300

FEATURES

1. Excellent adhesion to concrete and masonry substrates
2. Flexible coating
3. CFTRI approved
4. Easy to apply
5. Anti-efflorescence
6. CBA up to 2 mm
7. Withstand negative water pressure up to 4 bar

APPLICATION AREAS

1. Concrete roof, bathroom, toilet, kitchen, balconies, etc.
2. Swimming pools, water tanks and reservoirs etc.
3. Concrete foundations, basements wall and lift pits etc.

HOW TO USE

After proper surface preparation, maintain the surface in SSD condition. Using mechanical mixer, slowly add Powder Part B to Liquid Part A in a clean container until a smooth and homogenous slurry mixture is achieved. Apply 1st coat on surface and allow it to dry. After 4-6 hrs of first coat, apply second coat and then again allow it to dry for 5-6 hrs. After proper curing for 7-10 days, cover coating with any protective screed.

THEORETICAL COVERAGE

0.5-0.55 m² /kg/2 coat@1.2-1.5 mm DFT



TECHNICAL INFORMATION

PROPERTIES	RESULTS
Mixing Ratio -	1:1.4 (Part A Liquid - Part B Powder by weight)
Elongation at Break (%)	> 150
Food Grade certification	Pass
Adhesion to concrete	≥1 MPa

SHELF LIFE

Best before 12 months from date of production if stored properly in undamaged, unopened, original sealed packaging.

PACKAGING

12 kg | 48 kg

TRUBUILD BORETITE

Epoxy Based System for Bore Packing

Trubuild BoreTite is an epoxy-based, one-pack system specially formulated to achieve leak-free bore packing. It consists of moisture insensitive resin, hardener, selected filler & backer rod, provides fool proof bonding between PVC /CPVC /Iron pipes and concrete.

FEATURES

1. Excellent bond strength with different surfaces
2. High Compressive strength
3. High Endurance
4. Self Levelling
5. Excellent vibration dampening properties

APPLICATION AREAS

Grouting and sealing of gaps of pipe vents in bathrooms, toilets, balconies, roofs, fountains, artificial lakes etc.

HOW TO USE

1. Vertical Bore - Clean the bore thoroughly. Fix the backer rod inside gap at min. depth of 35-40 mm from the top of the surface.
2. Pour Part A and Part B into a container and mix thoroughly, then slowly add filler to it and then mix it again.
3. Slowly pour this mix at a single point in the bore, until it encircles the circumference of bore.
4. Then sprinkle the sand upon it to aid bonding to further applied waterproofing coating
5. Leave it for 24 hours for complete curing

THEORETICAL COVERAGE

- Width-5 mm* depth-50 mm- single 200 gm bore packing/ standard packet
- Width-10 mm* depth-25 mm- single 200 gm bore packing/ standard packet

NOTE- Coverage may vary as per width and depth.



TECHNICAL INFORMATION

PROPERTIES	RESULTS
Physical State	Liquid
Setting Time	24 Hrs
Bond Strength (Mpa)	Upto 3 MPa
Vibration Dampening	Good

SHELF LIFE

Best before 24 months from the date of manufacturing

PACKAGING

200 gm | 2 kg



PROTECTIVE COATINGS

TRUBUILD WRP 777

Water Repellent

TRUBUILD WRP 777 is silane based non-flammable water soluble solution designed to incorporate water repellence to varied surface like sand stone, concrete, exposed bricks and terracotta tiles.

Meets the requirement of IS 12027:1987

FEATURES

1. Ready to use
2. Maintain the natural look of surface
3. Repels water from entering into the surface
4. Penetrates deeply due to low viscosity

APPLICATION AREAS

On porous surface like sand stone, concrete, exposed bricks and terracotta tiles

MIXING RATIO

No dilution

HOW TO APPLY

Surface to be treated should be dry and free from all dirt, oil, debris and all other contamination which could prevent penetration. Apply one coat of Trubuild WRP 777 by brush and left the same to dry for next 24 hrs. In case of high porosity, two coats need to be applied. Apply second coat wet on wet to improve the penetration and performance and leave the same to dry for next 24 hrs.

NOTE - Before applying to any substrate, sampling needs be done on small patch, if no adverse effect is observed than only use it on large area



TECHNICAL INFORMATION

PROPERTIES	RESULTS
Physical State	Low Viscous
Appearance	Transparent
Specific gravity	1.01 ± 0.01 gm/cc
Colour	Colorless

THEORETICAL COVERAGE

- On porous substrate: 5-6 Sq. meter/L/coat
- On low porous substrate: 7-8 Sq. meter/L/Coat

NOTE-Coverage depends on the porosity of the surface

SHELF LIFE

Best before 24 months from date of manufacturing if stored properly in undamaged, unopened, original sealed packaging.

PACKAGING

1 L | 5 L | 20 L

TRUBUILD WTS 888

Water Thinnable Sealer

Trubuild WTS 888 is a single component water thinnable sealer for sealing porosity of sand stone, bricks, concrete and other porous surfaces.

FEATURES

1. Water dilutable
2. Bond to various substrate like RCC, bricks, plaster, etc
3. Transparent after curing
4. UV resistant

APPLICATION AREAS

1. As a sealer for sand stone, concrete & marble surfaces.
2. Restore colour of terracotta tile.
3. As sealer for wood to reduce the consumption of paint and clear lacquer
4. Can be used on bricks after dilution with water

MIXING RATIO

Water can be added as per the gloss and performance requirement on substrate.

HOW TO APPLY

Surface to be treated should be dry and free from all dirt, oil, debris and all other contamination which could prevent penetration. Apply one coat of Trubuild WTS 888 by brush and left the same to dry for next 4- 6 hrs. Apply second coat and allow the same to dry for next 24 hrs. Water dilution can be done as per gloss requirement.

NOTE - Before applying to any substrate, sampling needs be done on small patch. If no adverse effect is observed than only use it on large area



TECHNICAL INFORMATION

PROPERTIES	RESULTS
Physical State	Low Viscous liquid
Appearance	Milky White
Viscosity	18-23
WFT*	Min. 50 μ / 2 coats
DFT*	Min. 40 μ / 2 coats

*Note: Depends upon the porosity of the substrate.

THEORETICAL COVERAGE

85-100sq.ft/kg per coat.
(depends upon the porosity of the surface)

SHELF LIFE

Best before 24 months from date of manufacturing if stored properly in undamaged, unopened, original sealed packaging.

PACKAGING

1 kg | 5 kg



CRACK FILLING

TRUBUILD CFP 425

Crack Filler Paste

Trubuild CFP 425 is ready to use paste composed of high quality weather durable acrylic emulsion polymer, properly selected graded filler and additive for filling nonstructural cracks.

FEATURES

1. Ready to use material
2. Flexible
3. Water resistance
4. Durable
5. UV resistant

APPLICATION AREAS

Internal & external Plastered brick masonry wall cracks of upto 5 mm width

MIXING RATIO

Paste: water:: 1:1 for bond coat, then filling by paste directly.

HOW TO APPLY

Surface must be free from dust, oil, grease, and loose particles etc. Moisten the surface before applying Trubuild CFP-425. Fine hair line cracks must be widened up to 1 mm minimum. Press Trubuild CFP-425 firmly into the crack with a spatula or putty knives and level with the surface. Care must be taken to avoid formation of cavities or bubbles during application. Allow it set for 24 hours and then apply another coat if required of Trubuild CFP-425.

TECHNICAL INFORMATION

PROPERTIES	RESULTS
Appearance	Smooth & thick paste
Color	White
Density(gm/cc)	1.62-1.72

THEORETICAL COVERAGE

25-30 running meter/kg/@5 mm width and 5 mm depth.

SHELF LIFE

Best before 12 months from date of manufacturing if stored properly in undamaged, unopened, original sealed packaging.

PACKAGING

500 gm | 1 kg | 5 kg



TRUBUILD CFP 525

Crack Filler Powder

TRUBUILD CFP 525 is cement based polymer modified powder for filling cracks in plastered surface. It is composed of cement, polymer and additives which requires only addition of water on site.

FEATURES

1. Adhesion – strong adhesion with cementitious surface
2. Ease of use
3. Water resistance
4. Durable
5. UV resistant

APPLICATION AREAS

Internal & external Plaster wall cracks of up to 5 mm width

HOW TO APPLY

- a) Ensure the joints edges are neat and sound. Make sure that surface is clean & free from standing water. The surface should be free of loose debris
- b) Contaminations of oil, grease or bitumen should be completely cleaned
- c) In normal conditions Trubuild CFP-525 does not require a primer. However, in critical areas water based acrylic or SBR based primer can be used depending on the severity of surface and application
- d) Mixing ratio of Trubuild CFP-525 to water varies with respect to the area of application
- e) For filling deep holes and cracks-reduce the water quantity to get a thicker pasty consistency.
- f) The final mixed product would be of dough consistency paste.
In case further soft consistency is required, measured quantity of water can be used



TECHNICAL INFORMATION

PROPERTIES	RESULTS
Appearance	Powder
Color	White
Bulk Density(gm/cc)	1.4-1.60

THEORETICAL COVERAGE

37.5 running meter per kg (for a depth & width of 5mm)

SHELF LIFE

Best before 12 months from date of manufacturing if stored properly in undamaged, unopened, original sealed packaging.

PACKAGING

1 kg



REPAIR & REHABILITATION

TRUBUILD WPL 333

Waterproofing SBR Latex

TRUBUILD WPL 333 is a ready to use styrene butadiene latex (SBR) for cement, concrete & mortar for waterproofing application. It is also can be used for repairing of old construction like floor, beams ,slabs etc. and water proofing of toilets, kitchen, roof, bathroom and roof, etc.

FEATURES

1. Easily applied by brush
2. Good waterproof coatings
3. Excellent cement modifier
4. Bond strongly to concrete, plaster, masonry
5. Improved flexural strength

APPLICATION AREAS

1. Waterproofing of roof, bathroom, kitchen, etc
2. As repair mortar – Polymer Modified Mortar for repairing of beams, column, etc
3. Bonding agent – For bonding new to old concrete/plaster substrate

HOW TO USE

Waterproof coating – After proper surface preparation, maintain the surface in SSD condition. For water proof coating make a slurry of 1:1.5 ratio (by volume) of Trubuild WPL 333 and cement. Apply 1st coat on surface and allow it to dry. After 4-6 hrs of first coat, apply second cost and then again allow it to dry for 5 -6 hrs. After proper curing for 7-10 days, cover coated membrane with protective screed.

MIXING RATIO

- Bond Coat: Trubuild WPL 333 + Cement = 1:1 (By volume)
- Waterproofing Coating: Trubuild WPL 333 + Cement in the proportion 1:1.5 (By volume, for waterproofing)
- Repair Mortar: Trubuild WPL 333 + Cement + Sand + Water = 7.5kg: 50kg: 150kg: 10L (For repair).



TECHNICAL INFORMATION

PROPERTIES	RESULTS
Physical State	Low Viscous Liquid
Appearance	Milky White
pH	7 - 9
Total Solid Content	38±1%
WFT*	Min. 500μ / 2 coats
DFT*	Min. 360μ / 2 coats

*Note: Depends upon the porosity of the substrate.

THEORETICAL COVERAGE

20-22 sq ft /kg / 2 coats for waterproofing coating

SHELF LIFE

Best before 24 months from date of manufacturing if stored properly in undamaged, unopened, original sealed packaging.

PACKAGING

200 gm | 500 gm | 1 kg | 10 kg | 20 kg | 50 kg

TRUBUILD WSL 334

Waterproofing Super SBR Latex

TRUBUILD WSL 334 is single component, ready to use styrene butadiene latex (SBR) with high performance characteristics. It can be used for repairing of old construction like floor, beams slabs etc. and for water proofing of toilets, kitchen, roof, bathroom and roof, etc.

FEATURES

1. Economical waterproofing
2. Can be used as bonding agent to increase adhesion of new to old concrete/plaster surface
3. Easily applied by brush
4. Improves flexural strength

APPLICATION AREAS

1. Waterproofing of roof, bathroom, kitchen, etc
2. As repair mortar – Polymer Modified Mortar for repairing of beams, columns, etc
3. Bonding agent – For bonding new to old concrete/plaster substrate

HOW TO USE

Waterproof coating – After proper surface preparation, maintain the surface in SSD condition. For water proof coating make a slurry of 1:4:7 ratio (by volume) of Trubuild WPL 334, water and Cement. Apply 1st coat on surface and allow it to dry. After 4-6 hrs of first coat, apply second coat and then again allow it to dry for 5-6 hrs. After proper curing for 7-10 days, cover coating with protective screed.

MIXING RATIO

- Bondcoat : Trubuild WSL 334 + Water + Cement = 1:4:7 (By volume)
- Waterproofing Coating: Trubuild WSL 334 + Water + Cement = 1:4:7 (Waterproofing slurry) (By volume)
- Repair Mortar: Trubuild WSL 334 + Water + Cement + Sand = 5L: 15L: 50kg: 150kg



TECHNICAL INFORMATION

PROPERTIES	RESULTS
Physical State	Low Viscous Liquid
Appearance	Milky White
pH	7 - 9
Total Solid Content	43±1%

THEORETICAL COVERAGE

80-90sq ft /kg / 2 coats for waterproofing coating

SHELF LIFE

Best before 24 months from date of manufacturing if stored properly in undamaged, unopened, original sealed packaging.

PACKAGING

200 gm | 500 gm | 1 Kg | 5 Kg | 10 Kg | 20 Kg

TRUBUILD BWP 222

Binder & Waterproofing

TRUBUILD BWP-222 is an acrylic co-polymer emulsion which can be used as waterproofing coating, as bonding agent for new substrate to old substrates and as cement mortar modifier.

FEATURES

1. Tough and abrasion resistant coating
2. Good cement modifier
3. Bond strongly to concrete, plaster, masonry

APPLICATION AREAS

1. Waterproofing of roof, bathroom, kitchen, etc
2. As repair mortar – Polymer Modified Mortar for repairing of beams, columns, etc
3. Bonding agent – For bonding new to old concrete substrate
4. Protection of concrete against corrosion

HOW TO USE

Waterproof coating – After proper surface preparation, maintain the surface in SSD condition. For water proof coating make a slurry of 1:2 ratio (by weight) of Trubuild BWP 222 and Cement. Apply 1st coat on surface and allow it to dry. After 4-6 hrs of first coat, apply second coat and then again allow it to dry for 5-6 hrs. After proper curing for 7-10 days, cover coating with protective screed.

MIXING RATIO

- Bondcoat : Trubuild BWP 222 + Cement = 1 : 1.5 (By weight)
- Waterproofing coating : Trubuild BWP 222+ Cement = 1:2 (By weight)



TECHNICAL INFORMATION

PROPERTIES	RESULTS
Physical State	Low Viscous Liquid
pH	7 - 8
Total Solid Content	38±1%
WFT*	Min. 500μ / 2 coats
DFT*	Min. 360μ / 2 coats

*Note: Depends upon the porosity of the substrate.

THEORETICAL COVERAGE

20-22 sq ft /kg / 2 coats for waterproofing coating

SHELF LIFE

Best before 24 months from date of manufacturing if stored properly in undamaged, unopened, original sealed packaging.

PACKAGING

200 gm | 500 gm | 1 kg | 5 kg | 20 kg

TRUBUILD APC 225

Acrylic Polymer Coating

TRUBUILD APC-225 is an acrylic polymer-based coating which is used in conjunction with cement as a coating for waterproofing and for bonding application.

FEATURES

1. Economical
2. Excellent adhesion
3. Can be used for horizontal and vertical applications
4. Can be used as bonding agent to increase adhesion of new to old concrete/plaster surface
5. Bond strongly to concrete, plaster, masonry

APPLICATION AREAS

1. Waterproofing of roof, bathroom, kitchen, etc
2. As repair mortar – Polymer Modified Mortar for repairing of beams, columns, etc
3. Bonding agent – For bonding new to old concrete/plaster substrate

HOW TO USE

Waterproof coating – After proper surface preparation, maintain the surface in SSD condition. For water proof coating make a slurry of 1:2 ratio (by weight) of Trubuild APC 225 and Cement. Apply 1st coat on surface and allow it to dry. After 4-6 hrs of first coat, apply second coat and then again allow it to dry for 5-6 hrs. After proper curing for 7-10 days, cover coating with protective screed.

MIXING RATIO

Waterproofing coating: Trubuild APC 225 + Cement = 1:2 (By weight)



TECHNICAL INFORMATION

PROPERTIES	RESULTS
Physical State	Low Viscous Liquid
Appearance	Opaque
Color	White
pH	7-8
Specific Gravity	1.01-1.03
Compressive Strength	30-40 N/mm ²
*WFT (2 Coats)	Min.300 microns /2 coats
*DFT (2 Coats)	Min.200 microns /2 coats
*Note - It depends upon the porosity of the substrate.	

THEORETICAL COVERAGE

25-30 sq ft /kg / 2 coats for waterproofing coating

SHELF LIFE

Best before 24 months from date of manufacturing if stored properly in undamaged, unopened, original sealed packaging.

PACKAGING

10 kg | 20 kg | 50 kg

TRUBUILD TCSR 555

Two Component Concrete Structural Repair

TRUBUILD TCSR-555 is two component solvent free epoxy system for repairing cracked and damaged concrete structures, as bond coat and as well as for grouting.

FEATURES

1. Food grade – CFTRI certified
2. Excellent bonding agent
3. Adhesion to most of building material
4. Low shrinkage
5. High strength

APPLICATION AREAS

1. Bonding agent between old and new concrete.
2. Can be used for filling cracks, joints, etc
3. Can be used for repair of column, beam, etc
4. Can be used in core cut filling and other grouting system
5. Waterproof coating

MIXING RATIO

Resin : Hardener :: 100:50 (By weight)

HOW TO APPLY

Take resin and hardener as per mentioned ratio, mix thoroughly, apply the mix on clean and concrete surface. 1 kg material will cover 1 sq.mtr area in 1 mm thickness. Leave applied surface untouched for 24 hours. Apply second coat and sprinkle silica coarse sand. After drying lay of 1 inch of thick layer of cement mortar to prevent the treated surface from the direct ultra violet rays.



TECHNICAL INFORMATION

PROPERTIES	RESULTS
Physical State	Low Viscous Liquid
Appearance	Transparent
Shore D	60-65
Lap Shear after 24 Hr	70-100 kg/cm ²

THEORETICAL COVERAGE

Waterproof coating – 15-20 sq.ft. / kg / 2 coats

SHELF LIFE

Best before 24 months from date of manufacturing if stored properly in undamaged, unopened, original sealed packaging.

PACKAGING

300 gm | 1.5 kg | 7.5 kg



SEALANTS

RESIBOND WEATHER 5010

Weather Sealant

RESIBOND WEATHER 5010 is a high-quality, elastic, single-component silicone sealant. It is used for filling gaps, cracks in exterior plaster and concrete. It has excellent adhesion to metal, glass, ceramic, etc.



FEATURES

1. Weatherproof silicone sealant
2. Permanent elastic after cure
3. UV resistance
4. Excellent adhesion to metal, glass, ceramics, plastics, etc

APPLICATION AREAS

1. For glass to ACP sheet sealing in building exteriors

HOW TO APPLY

- a) Surfaces must be clean, dry & free from grease and detergents.
- b) Mask adjacent surfaces for neat application.
- c) Cut tip of cartridge, cut nozzle to desired size at 45° angle, attach to cartridge, and place in a caulking gun.
- d) Apply sealant in a continuous, steady flow. Push sealant ahead of nozzle contacting both sides of joint so it is completely filled.
- e) Smoothen the sealant surface immediately after application before skin forms. Use spatula dipped in mild detergent. Remove masking tape before sealant skins.
- f) Excess uncured sealant should be removed immediately with clean cloth dampened in mineral turpentine.

TECHNICAL INFORMATION

PROPERTIES	RESULTS
Density	1.35-1.50 gm/cc
Elongation (%)	300-700
Depth curing	1-2 mm/day

SHELF LIFE

Best before 12 months from date of manufacturing if stored properly in undamaged, unopened, original sealed packaging.

PACKAGING

Plastic cartridge: 300 ml cartridge & 600 ml sausage

TRUBUILD SEALMASTER FLEXI

MS Polymer Hybrid Sealant

Trubuild Sealmaster Flexi is a high-quality, single-component, elastic joint sealant based on MS-Polymer. Once applied, the compound reacts with atmospheric moisture to form a tough and durable elastic seal.

FEATURES

1. High adhesive strength on most substrates
2. Superior mechanical properties
3. Permanently elastic after curing
4. UV resistant
5. Excellent weather resistance
6. Can be painted
7. Does not contain Isocyanates, hence safe

APPLICATION AREAS

1. Suitable for interior and exterior applications
2. Sealing of control and expansion joints
3. Bonding of metals, glass, ceramics & CPVC

HOW TO APPLY

- a) Clean the application area. Make it dry & free from grease and detergents.
- b) Mask adjacent surfaces for neat application.
- c) Cut tip of sausage and put into the sausage gun and consider your required bead width and remove an appropriate section from the end of the nozzle.
- d) Apply sealant in continuous, steady flow. Push sealant ahead of nozzle contacting both sides of joint so it is completely filled
- e) Smooth sealant surface immediately after application before skin forms. Use spatula dipped in mild detergent.
- f) Remove masking tape before sealant skins. Excess sealant should be removed immediately with clean cloth dampened in mineral turpentine.



TECHNICAL INFORMATION

PROPERTIES	RESULTS
Density	1.35 - 1.5 (gm/cc)
Tensile strength	2.14 MPa
Elongation (%)	>500
Shore A hardness	34
MAF	+/- 50%
Depth cure	Approx. 1 - 2 mm per day

SHELF LIFE

Best before 12 months from the date of manufacturing

PACKAGING

Available in white, grey and black in 600 ml sausages.

TIP TIP NAHI

TRU BUILD

ADVANCED WATERPROOFING TILING & GROUTING SOLUTIONS

Integral

Repair & WP Polymers

Crack Filling

Terrace & Wall Coating

Polyurethane

2K Cementitious

Tile Grouts

Tile Adhesives

Sealants

Clearcoats

Epoxy Coatings

Mortars

ASTRAL[®] TRU BUILD[™]



**THE ADVANCED
WATERPROOFING RANGE**



Closer to you

VISIT US AT

www.wecare.astraladhesives.com



Scan the QR to download
the Waterproofing Brochure



ASTRAL LIMITED

HEAD OFFICE

207/1, Astral House, B/H
Rajpath Club, Off. S.G. Highway,
Ahmedabad-380059, Gujarat
+91-79-66212000


CORPORATE OFFICE

Office No. 9A, 9th Floor,
Krishna Tower, 15/63, Civil
Lines, Kanpur-208021, UP
+91-512-6670400/ 2331646

MUMBAI OFFICE:

C-615/616, C-Wing, Atrium, Chakala,
Andheri-Kurla Road, Andheri (East),
Mumbai-400 059, Maharashtra,
India.+91-9167216887

 customercare@astraladhesives.com

 +91 7311103331

 www.trubuild.in